



**Ziegler**

**PFPN 10-1500**

**ULTRA  
POWER**



Portable pump with Volkswagen BVS 4-stroke Otto engine, electronic injection, designed as PFPN 10-1000 und 10-1500, tested in compliance with DIN EN 14466.



## The most powerful portable DIN pump of the Ultra series



**With the new ULTRA POWER, you get the right pressure no matter where you are.**

The pump output has now been increased to approx. 1700 l/min at 10 bar. It can be used as a bilge pump without conversion. The automatic pump pressure control Tourmat D ensures that the pressure remains constant. Priming system with automatic rpm limitation. The most modern pump technology, eco-friendly, low vibration, smooth running. Optimum operability is reached through the multi-function display. All controls are functionally arranged and user friendly. Small dimensions make the pump easy to handle.

Worldwide VW service network.

Types in compliance with DIN EN 14466

- PFPN 10-1000  
Serial No AZ 10101P108
- PFPN 10-1500  
Serial No AZ 10151P108

### **Pump:**

**PFPN 10-1500 in compliance with DIN 1028.**

High efficiency single-stage centrifugal fire pump. Water carrying parts of seawater resistant light aluminium metal alloy or stainless steel. Sealing of the pump by radial seal. With size „A“ suction inlet and two size „B“ delivery outlets with self-closing globe valves, all with fixed couplings and blank caps. Transmission from engine by means of single-plate dry clutch.

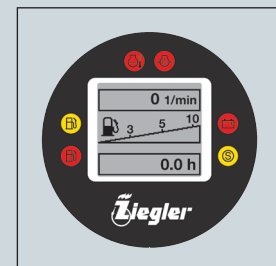
### **Priming system:**

**TROKOMAT PLUS** - fully automatic

### **Gauges and controls:**

Improved operability with a clearly laid out multi-function display for the following functions:

- Fuel gauge with warning light
- RPM counter and telltale lamp for priming rpm limitation
- Hour meter
- Warning and control lamps for cooling water, oil pressure and battery charge







**Engine:**

VW 4-stroke aluminium engine 1.2 l, with electronic petrol injection, 45 kW at 5200 rpm.

Cooling: closed cooling water circuit with heat exchanger and additional cooler.

Electronic 2-stage rpm limitation for priming and max. rpm acting on the injection unit. Contactless battery ignition, maintenance-free valves through hydro rod.

**Starter:**

Electric starter. Starter cable optional.

Nicely shaped symmetric housing.

Tank of 20 l for unleaded 4-star petrol (RON 95) or regular-grade petrol (RON 91). Engine control by knock sensor.

Petrol pump with fill level sensor integrated into the tank, fuel tap no longer necessary.

**Lighting**

1 pull-out halogen spotlight

**Easy to handle**

On opening the hood, checking and refilling of cooling fluid and engine oil is very easy.

**Pump carrying frame**

High-strength light metal frame with 4 ergonomically arranged hinged and rotatable handles with thermal hand guard.



**Technical data:**

Nominal output:  
 PFPN 10-1000  
 1000 l/min at 10 bar and  
 3 m geodetic suction height  
 PFPN 10-1500  
 1500 l/min at 10 bar and  
 3 m geodetic suction height

**Pump output:**

at 3 m geodetic suction height  
 approx. 1700 l/min at 10 bar  
 approx. 1900 l/min at 8 bar  
 approx. 2000 l/min at 6 bar,

at 1.5 m geodetic suction height  
 approx. 2150 l/min at 4 bar,

at 7.5 m geodetic suction height  
 approx. 1050 l/min at 8 bar.

Output as bilge pump:  
 approx. 2000 l/min at 3 m geodetic  
 suction height

**Priming time:**

5 s at 3 m geodetic suction height  
 19 s at 7.5 m geodetic suction height

**Dimensions: (LxWxH)**

approx. 1042x710x820 mm

**Weight:**

approx. 195 kg ready for use

